

Telemedicine Carts

Transformative Turnkey Solution



Our Service

Experience continuity of care and elevate your hospital's telehealth services with our telemedicine carts. Our carts offer a turnkey solution designed to supplement and enhance the capabilities of facilities already utilizing our telehealth services. We provide flexible, comprehensive support for this cost-effective device to support your facility's goals and improve the quality of telemedicine services to your patients.

HIGHLIGHTS

- Our carts provide all-inclusive pricing to better serve our hospital partners
- Flexible support allows your facility to choose the desired level of management required for the carts
- Purchase and lease options ensure your facility can choose the arrangement that best aligns with its needs and budget

BENEFITS

- Centralized quality management and a single point of contact for telemedicine service and technical needs
- SOC2 and HiTrust compliant, the highest standards of security and privacy
- 24/7 assistance is available to address any technical issue that may arise
- Easy to implement and affordable solution for your hospital

What You Need to Know

- ✓ The physical cart and camera serve as components that enhance our telehealth services
- ✓ Orders are delivered to your hospital in as little as 3-4 weeks
- ✓ All carts use an integrated video platform
- ✓ Carts are Android-based, avoiding patchwork
- ✓ Replacement parts, batteries, and cameras are available for purchase

Experience a **convenient and cost-effective solution** to enhance your facility's healthcare capabilities.



Discover how our Telemedicine carts can improve continuity of care in your facility today.

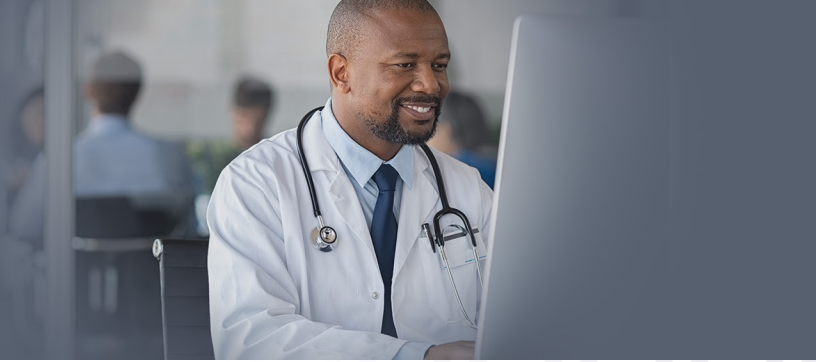


1.866.785.7769 | marketing@tstelemed.com | tstelemed.com
11215 Metro Parkway, Building 3, Suite 1, Fort Myers, FL 33966

© 2023 TeleSpecialists®. All Rights Reserved.

Telemedicine Carts

Transformative Turnkey Solution



Technical Requirements

NETWORK

- Wifi 802.11 ac 2.5 Ghz. MIMO, dual antennas
- Ethernet 10/100/1000 Base-T full duplex (RJ-45)

AUDIO

- Built-in smart mic array - 4x High sensitivity MEMS mic array
- 16-core high powered dedicated voice processing DSP
- Multidirectional noise recognition and beamforming audio (preferred) 24+ feet voice pickup with VoiP and Smart Assistant automatic modes
- Built-in supplementary speakers with 6W power

DISPLAY

- Hot-swap batteries
- Medically Certified - IEC/UL/cUL 60601-1
- Antimicrobial and Disinfectable Housing
- PCAP Multi-Touch
- 1920x1080 Full HD resolution
- 16:9 aspect ratio

DIMENSIONS

- 11" (L) x 2.5" (H) x 3" (D)

CAMERA

- Internal camera with pan, tilt, and 5x digital zoom
- Up to 30x optical PTZ camera

VIDEO

- 4K60 Camera
- Lens - F.2.2 FOV 112deg, 100+deg Horizontal Multi aspherical glass/plastic elements
- IR Lights and night filters for night vision
- Hardware based camera privacy switch

INPUT | OUTPUT

- 1 x USB Type C
- 1 x MicroSD XC
- 1 x HDMI 2.0 (Input)
- 1 x HDMI 2.0 4K60 (Output)
- Remote control (for debugging)

FLEET MONITORING

- Remote device monitoring
- Device status alerts & notifications



Discover how our Telemedicine carts can improve continuity of care in your facility today.

1.866.785.7769 | marketing@tstelemed.com | tstelemed.com
11215 Metro Parkway, Building 3, Suite 1, Fort Myers, FL 33966

